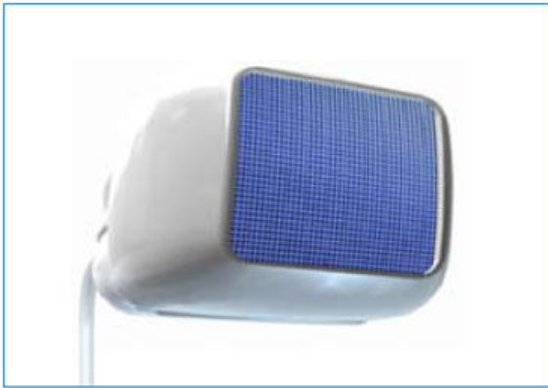


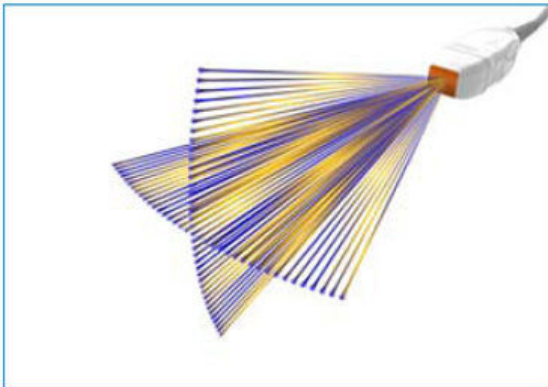
xMATRIX Array Technology



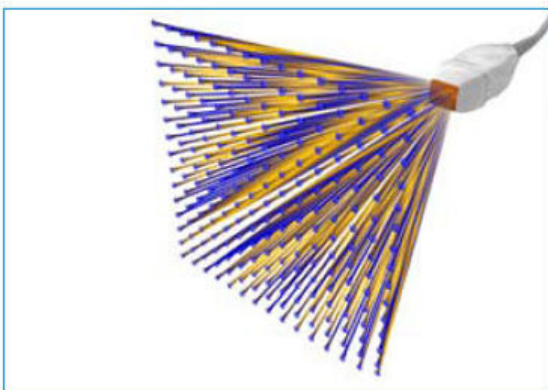
xMATRIX array technology utilizes 2400 fully-sampled elements for 360-degree focusing and steering.

New visualization tools reveal more tissue information and improved disease assessment

xMATRIX technology enables acquisition of remarkably high quality 2D and 3D images with the same ergonomic transducer. xMATRIX technology also enables Live xPlane imaging – the ability to acquire two planes simultaneously from the same heartbeat. Multi-directional beam steering lets you select unlimited planes in all directions, so you can get the precise view you want, with no degradation in image quality.



Live xPlane imaging creates two full-resolution planes simultaneously, allowing you to capture twice as much clinical information in the same amount of time.



Live Volume imaging allows the acquisition and rendering of full volume data at true real-time frame rates with unparalleled isovoxel resolution.