

# Navi System Quick Guide

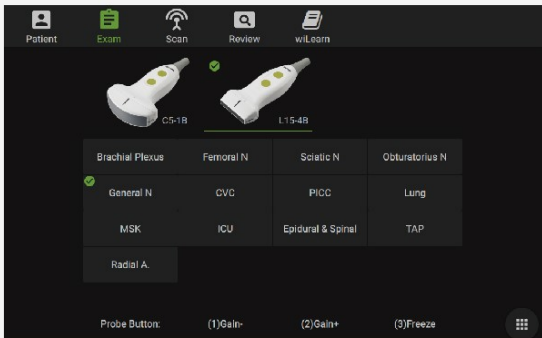
## Step 1: Starting

1



Before operation, please make sure system is being charged or battery capacity is enough (battery percentage can be viewed by pressing up/down button). Press up/down button to adjust system height to a comfortable position.

2



Touch **【Exam】** to select probe and body parts.

## Step 2: Scan and End Exam

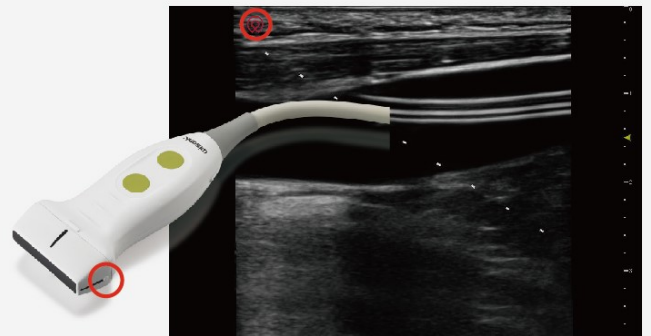
1

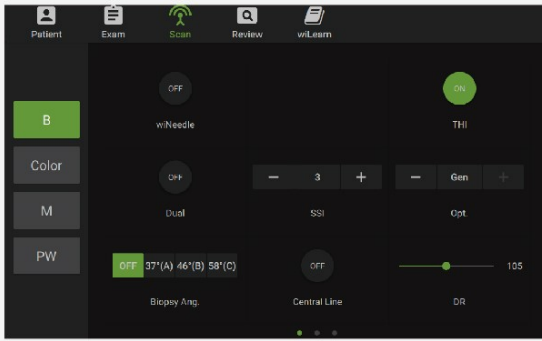
Apply gel on probe, then place a disposable plastic cover on probe, make sure there is no air between probe surface and cover.



2

Recognize the probe direction mark (probe mark is corresponding to red round icon on screen).








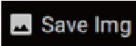
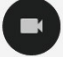
Scan the patient. More detailed operations please refer to step 3.



When comes the next patient, end the last patient exam.

## Step 3: More Operations

(Operations described below is not compulsory to all users, please apply it when necessary)

- 1 Adjust Gain: touch **Auto** to perform quick adjustment, or you can slide the gain bar to increase or decrease. 
- 2 Adjust Depth: touch arrows  on the right middle of screen to increase or decrease depth.
- 3 Open Probe Central Line: out-of-plane procedure applies central line on screen often, you can touch to open or close.
- 4 Focus Position: along with depth scale there is a focus icon , you can either drag and move or touch any position on depth scale to move.
- 5 Color: under **Scan** menu, there are several modes selectable, touch **Color** to view vessel flow.
- 6 Save and Record: touch  to save image, touch record icon  to record a cine.
- 7 Probe Button: 3 buttons on the probe, any of them have corresponding number close to button. Function illustration under **Exam** menu is listed at bottom of screen.



**Shenzhen Wisonic Medical Technology Co., Ltd.**

Address: 5 Floor, NO.6 Building, Pingshan Technology Park, Taoyuan Street, Nanshan District, Shenzhen, China

Tel: +86-755-86007788

Email: info@wisonic.cn

www.wisonic.cn