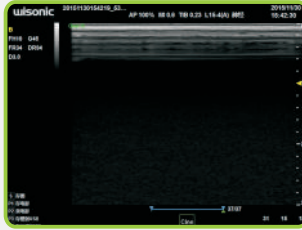


Clover Quick Guide

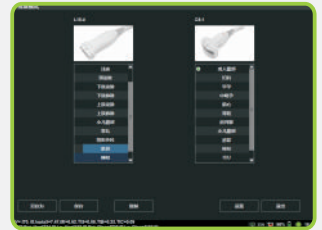
1 Starting



1. Before operation, makes sure the machine is charged.



2. Press the power button to start, you can find the above pic after 23 seconds.

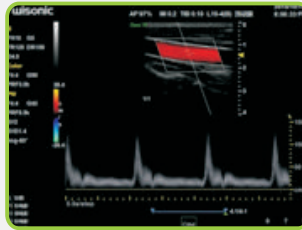


3. Press **[probe]** button, then select corresponding application after click correct examination item.

2 Scanning & Ending



1. Find the probe direction mark (The image of this mark direction will be shown on the left side of screen).



2. Use the gel, then scanning patient. You can check more option operation by below steps if any more question.



3. If you finish the current patient or want to switch another patient temporarily. You can press the **[End Exam]** button.

3 Option operation

(The below steps is option operation. It is not necessary if you don't need.)

1. Image adjustment: click **[Auto]** button to adjust the image quality quickly. You also can rotate the **[Gain]** key by manual adjustment.
2. Depth adjustment: press **[Depth]** key to find appropriate image size.
3. Color flow: press **[Color]** key to enter the color mode, then move the track ball to adjust the sample volume position to point blood vessel. If the sample volume size is not good, press the **[Set]**, then move track ball to change the sample volume size, and press **[Set]** to confirm again.
4. Measurement : freeze image, then press **[Measurement]** to start the normal measurement, moves the caliper to point target by moving track ball. Press **[Set]** when you do the measure.
5. Image annotation: directly enter the comment by using the keyboard, or press **[Label ABC]** to start the annotation menu, select the built in notes and click it.
6. Body mark: press **[Mark Body]** to select a pic what you want to add, move the track ball to position body mark, then rotate probe mark direction from the shortcut knob.
7. Pic & movie saving: press **[Save]** button to save single image. Press **[P1]** to save the movie. Press **[P2]** to start the video, press P2 again to end the video.



- A. Rotate the knob to select a desired parameter.
- B. Press the button to switch between On/Off, or among other parameters.
- C. Press Left/Right button to switch among modes, press UP/Down to change pages.



1. Power on

2.Quick Knobs and buttons

3. Key board

4. Exam procedure

Patient: Patient information

Probe: Probe select and Exam switch

Review: Review images and cines

End Exam: End exam

5. Imging mode:

B mode

Color mode

Power mode

M mode

PW mode

CW mode

Holo™ PW

Dual

6. Trackball and Measurement

Centric trackball

Measure: Measure without label

Calc: Measure with label

Set: To confirm

Update:Initiate or refresh M/PW/CW image

Cursor:Cursor pointer

7. Imaging Parameters

Auto: Auto optimization for B, Color, PW, and also work for Auto Doppler

Depth: Adjust image depth

Zoom: Read zoom and write zoom

8. Save & Freeze

Save:Save image or cine in a way of preset

Feeze: Freeze Image

P1, P2: Programmable keys

Shenzhen Wisonic Medical Technology Co., Ltd.

Add: 5th Floor,NO.6 Building,Pingshan Technology Park,
Taoyuan Street, Nanshan District, Shenzhen,China

Tel:+86-755-86007788

Fax:+86-755-86007799

Email:info@wisonic.cn

www. wisonic. cn

